

CERTIFIED LAND CORNER RECORDATION

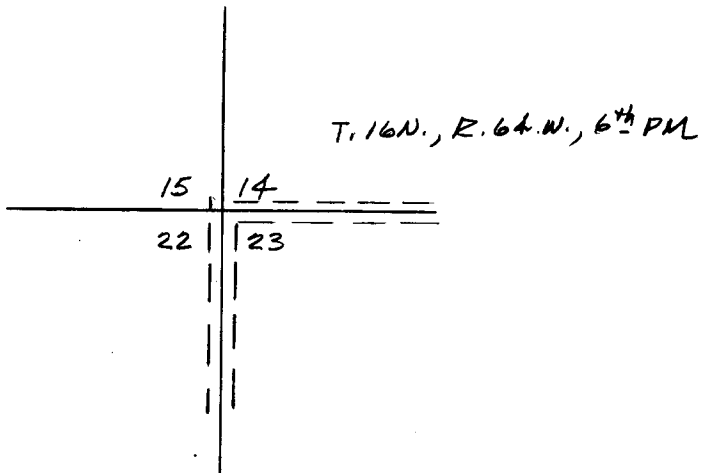
DESCRIPTION OF CORNER EVIDENCE FOUND, AND ORIGINAL RECORD (If known)

FOUND MARKED STONE-STONE HAD
 BEEN HIT & BROKEN - DUG HOLE &
 BURIED STONE - REPLACED WITH 2"
 ALUMINUM CAP ON 1/2" x 5'0" REBAR
 CAP MARKED $\frac{15}{22} | \frac{14}{23}$

DESCRIPTION OF MONUMENT AND ACCESSORIES ESTABLISHED
 TO PERPETUATE THE ORIGINAL LOCATION OF THIS CORNER:

SURVEYED SECTION LINE SOUTH-5270.99'
 SET INTERMEDIATE POINTS ON LINE
 SEE RECORDED SURVEY (#699259-5-20-83)

SKETCH, WITH COURSE AND DISTANCE TO ADJACENT CORNER IF DETERMINED IN THIS SURVEY.
 (May Sketch or Paste Reproduction on Reverse Side.)



I, Donald M Hopkins certify that I have carefully performed or reviewed the work done on the diagrammed corner as reported on this recordation form and approve the same.

Donald M Hopkins
 Signature of Surveyor

558
 Registration No.

STATE OF WYOMING,
 Office of Clerk and Recorder,
 County of _____

699251

This "corner record" was filed for record on the _____ day of MAY 20 1983, 19____, was noted on the cross-index plat and is assigned page No. _____, in book No. _____.

County Official			
Cross Index No. _____	T. _____	R. _____	Mer. _____
_____	T. _____	R. _____	Mer. _____
_____	T. _____	R. _____	Mer. _____
_____	T. _____	R. _____	Mer. _____
_____	T. _____	R. _____	Mer. _____
_____	T. _____	R. _____	Mer. _____
_____	T. _____	R. _____	Mer. _____

N-17 16/64